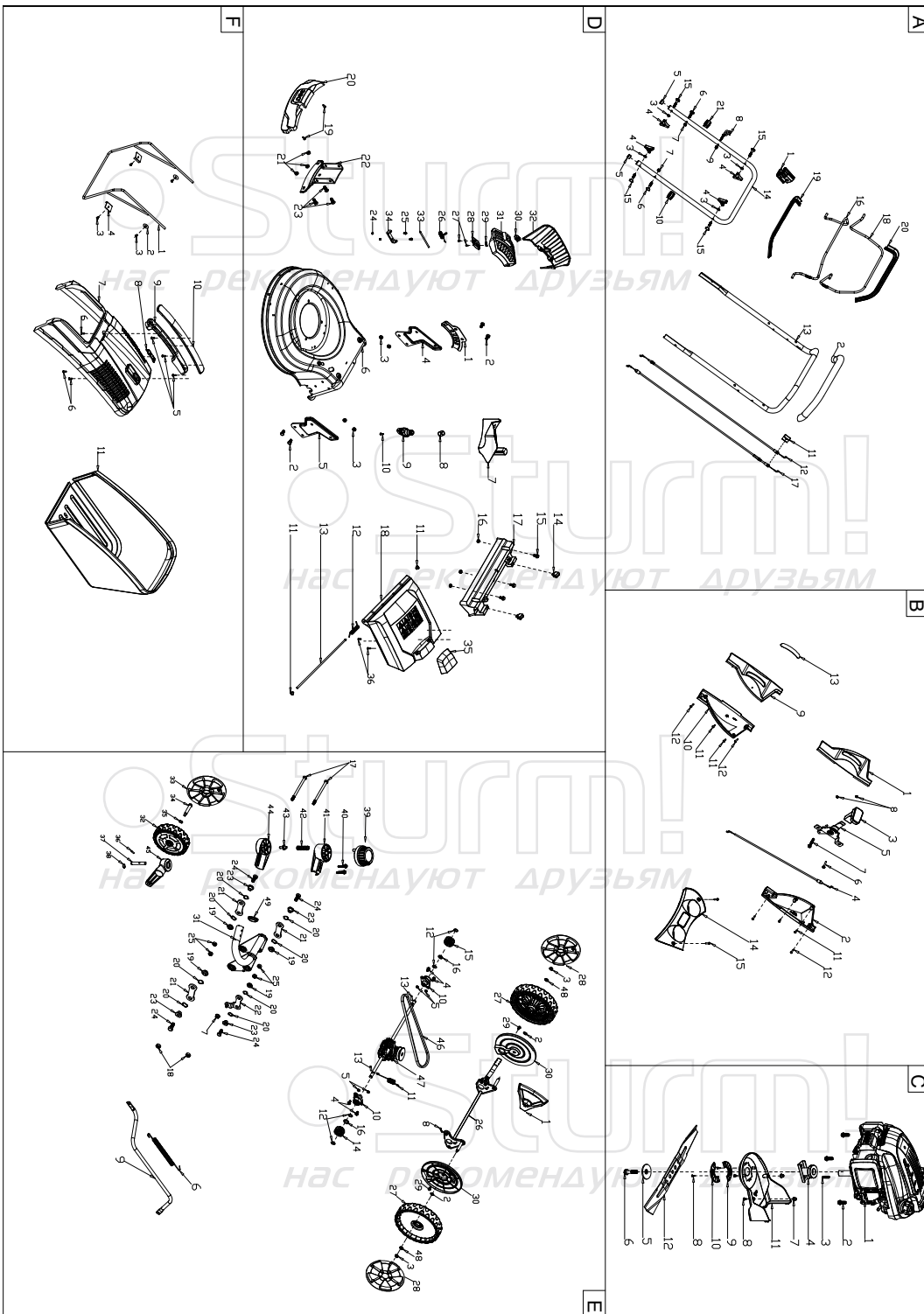


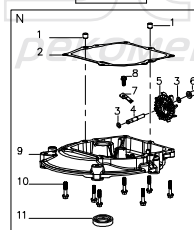
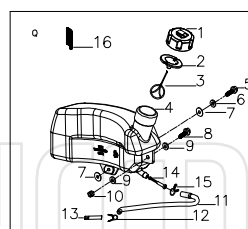
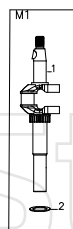
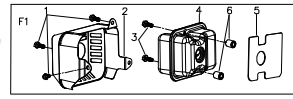
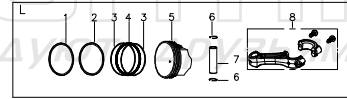
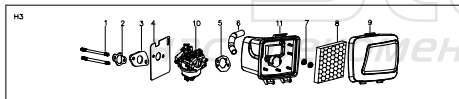
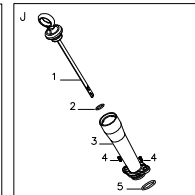
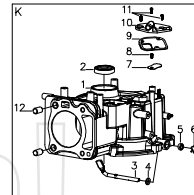
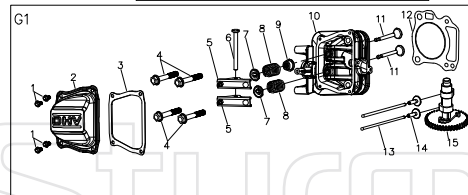
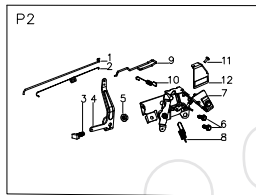
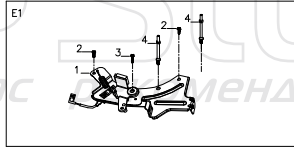
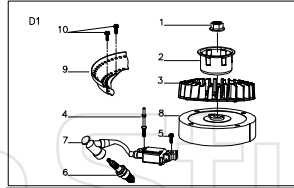
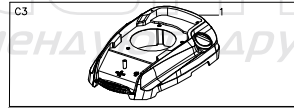
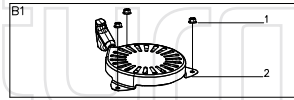
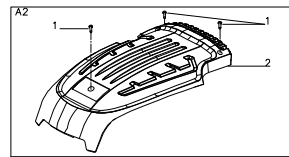
PL5117SF

No	Description	No	Description	No	Description
A-1	Limiting Stopper	D-1	Height Adjustment Plate	E-13	Pin
A-2	Foam Pipe	D-2	Bolt M8X15	E-14	Left Gear
A-3	Washer Φ8	D-3	Nut M8	E-15	Right Gear
A-4	Knob	D-4	Right Bracket	E-16	Washer φ12
A-5	Handle Plug	D-5	Left Bracket	E-17	Bolt M8X130
A-6	Bolt M8X35	D-6	Deck	E-18	Nut M8
A-7	Nut M8	D-7	Mulching Plug	E-19	Bush
A-8	Rope Guide	D-8	Cable Sleeve	E-20	Flat Washer
A-9	Nut M6	D-9	Washing Linker	E-21	plate
A-10	Cable Support	D-10	Screw ST5.0X16	E-22	plate
A-11	Cable Fixing Clamp	D-11	plug	E-23	Bush
A-12	Cable	D-12	Rear Cover Spring	E-24	Bolt M8X30
A-13	Upper Handle	D-13	Rear Cover Shaft	E-25	Nut M8
A-14	Lower Handle	D-14	Rear Cover Support	E-26	Rear Wheel Shaft
A-15	Bolt M8X50	D-15	Bolt M6X14	E-27	11" wheel
A-16	Brake Lever	D-16	Nut M6	E-28	11" Outer Wheel Cover
A-17	Clutch cable	D-17	Rear Cover Pedestal	E-29	Bolt M6X12
A-18	Clutch Lever	D-18	Rear cover	E-30	Inner Wheel Cover
A-19	Plastic Decoration 1	D-19	Screw ST4.2X15	E-31	Connecting rod
A-20	Plastic Decoration 2	D-20	Guard board	E-32	8" Wheel
A-21	Cable Support	D-21	Nut M8	E-33	8" Outer Wheel Cover
B-1	Upper Cover of Left Panel	D-22	Fixed plate	E-34	Wheel axle
B-2	Lower Cover of Left Panel	D-23	Bolt M8X15	E-35	Spring Washer φ13
B-3	Plastic Grip	D-24	Nut M5	E-36	Pin
B-4	Cable	D-25	Bolt M5X12	E-37	rotating shaft
B-5	Handle	D-26	Side Discharge Cover Spring	E-38	Lock Ring
B-6	Bolt M6X30	D-27	Screw ST4.2X13	E-39	Lock Knob
B-7	Bolt M6X40	D-28	Cover Plate	E-40	Screw M5x35
B-8	Nut M6	D-29	Spring	E-41	upper cover of Lock
B-9	Upper Cover of Right Panel	D-30	Lock	E-42	Spring
B-10	Lower Cover of Right Panel	D-31	Side Discharge cover	E-43	Pin
B-11	Screw ST4.2X15	D-32	Side-Discharge Guiding Board	E-44	lower cover of Lock
B-12	Screw ST4.2X25	D-33	Side Discharge Cover Shaft	E-45	Holder
B-13	Handle Panel	D-34	Side Discharge Bracket	E-46	Belt
B-14	Handle Panel	D-35	cover	E-47	Gearbox
B-15	Screw ST4.2X25	D-36	Screw ST4.2X13	E-48	Washer φ13
C-1	Engine	E-1	Height Adjustment Handle	E-49	Connecting rod
C-2	Bolt M8X25	E-2	Spring Washer	F-1	Metal Bracket
C-3	Flat Key	E-3	Nut φ13	F-2	Washer φ5
C-4	Blade adapter	E-4	Bolt M5X12	F-3	Screw ST4.8X13
C-5	Blade Washer	E-5	Nut M5	F-4	fixed plate
C-6	Blade Bolt 3/8-24UNFX35	E-6	Height adjustment Spring	F-5	Screw ST5.0X16
C-7	Screw Cap	E-7	Nut M6	F-6	Screw ST4.2X13
C-8	Screw ST4.8X13	E-8	Split Pin	F-7	Indicated Board
C-9	Belt Cover Plate 1	E-9	Connecting Rod	F-8	Handle
C-10	Belt Cover Plate 2	E-10	Shaft Sleeve	F-9	Handle cover
C-11	Belt Cover	E-11	Spring	F-10	Plastic Cover
C-12	Blade	E-12	Lock Ring	F-11	Fabric bag

PL5117SF-EX-RUS230914



ENGINE FOR PL5117SF



No	Description	No	Description	No	Description
A2-1	Screw ST4.2X15	H3-1	Double Bolt M6X92	N-3	Washer
A2-2	Engine Cover	H3-2	Paper Gasket of Inlet Pipe	N-4	Circlip of Gear shaft
B1-1	Nut M6	H3-3	Air Inlet Pipe	N-5	Gear Shaft Assy
B1-2	Hand starting	H3-4	Paper Gasket of Carburetor	N-6	Sliding Sleeve
C3-1	Blower Housing	H3-5	Gasket	N-7	Gear Shaft Hold-down Plate
D1-1	Nut M14X1.5	H3-6	Exhaust Pipe	N-8	Bolt M6X12
D1-2	Start-up Hub	H3-7	Nut M6	N-9	Crankcase Cover
D1-3	Fan	H3-8	Foam Filter Element	N-10	Bolt M6X30
D1-4	Bolt I	H3-9	Air Filter Upper Cover	N-11	Oil Seal
D1-5	Bolt M6X25	H3-10	Carburetor	P2-1	Handspike of Valve
D1-6	Spark plug	H3-11	Air Filter	P2-2	Spring of Valve
D1-7	Ignition	J-1	Lubricating Gauge	P2-3	T-Bolt
D1-8	Flywheel	J-2	"o" Ring $\phi 20 \times \phi 2.3$	P2-4	Speed Regulator Rocker
D1-9	Back plate	J-3	Lubricating Pipe Assy	P2-5	Nut M6
D1-10	Bolt M6X18	J-4	Screw M4x10	P2-6	Bolt M6X12
E1-1	Brake Assy	J-5	"O" Ring	P2-7	Speed Regulator
E1-2	Bolt M5X12	K-1	Crankcase	P2-8	Speed Regulator Spring
E1-3	Bolt M5X18	K-2	Oil Seal	P2-9	Handspike
E1-4	Bolt II	K-3	Speed Regulator Rocker Spindle	P2-10	Speed Regulator Spring
F1-1	Bolt M5X10	K-4	Washer $\phi 6$	P2-11	Screw M4X6
F1-2	Muffler Cover Assy	K-5	Oil Seal	P2-12	Plate
F1-3	Bolt M6X30	K-6	Springness Split Pin	Q-1	Fuel Tank Cap
F1-4	Muffler Assy	K-7	Valve Element	Q-2	Seal Gasket of Fuel Tank Cap
F1-5	Gasket of Muffler	K-8	Screw M4x6	Q-3	Connecting Rope
F1-6	bushing	K-9	Gasket of Respirator Cover	Q-4	Fuel Tank
G-1	Bolt M5X12	K-10	Respirator Cover Plate	Q-5	Bolt M6X30
G-2	Cylinder Head Cover	K-11	Screw M4x10	Q-6	Spring washer $\phi 6$
G-3	Gasket of Cylinder Head Cover	K-12	Locating Pin	Q-7	Washer $\phi 6$
G-4	Bolt M8X45	L-1	Piston Ring I	Q-8	Bolt M6X22
G-5	Rocker of Valve	L-2	Piston Ring II	Q-9	Gasket
G-6	pin	L-3	Scraper Ring	Q-10	Nut M6
G-7	Spring Coil of outlet Valve	L-4	Bushing Ring	Q-11	Oil Pipe
G-8	Spring of Valve	L-5	Piston	Q-12	Oil Pipe Circlip II
G-9	Oil Seal	L-6	Spring	Q-13	Oil Pipe Fixing Clip
G-10	Cylinder Head Assy	L-7	Piston Pin	Q-14	Filtering Net Duct of Fuel
G-11	Valve	L-8	Connecting Rod Assy	Q-15	Oil Pipe Circlip I
G-12	Seal Gasket	M1-1	Crankshaft	Q-16	Lubricate Filtering Net
G-13	Guide Board of Handspike	M1-2	Gasket of Gear		
G-14	Tappet	N-1	Locating Pin of Crankcase		
G-15	Camshaft Assy	N-2	Gasket of Crankcase		